

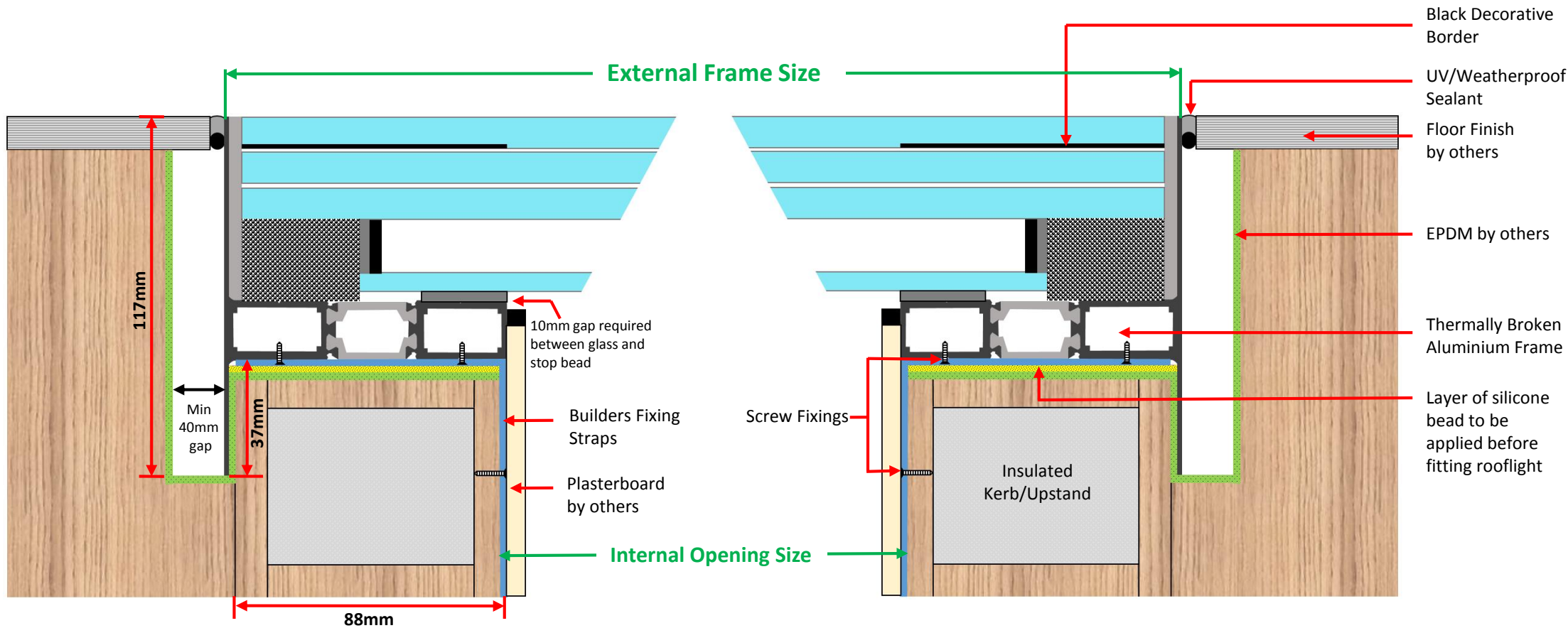
Typical Installation Guide

Thermal Walk on Rooflight

33mm Toughened Laminated Glass

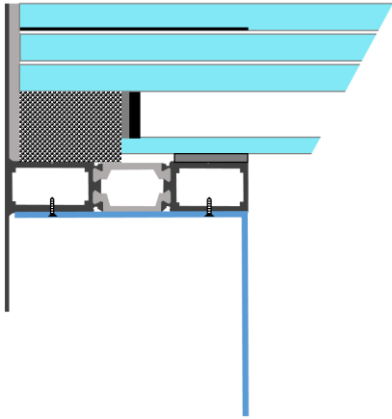
Argon Gas Filled Cavity with Thermal Spacer

6mm Toughened Low E Glass

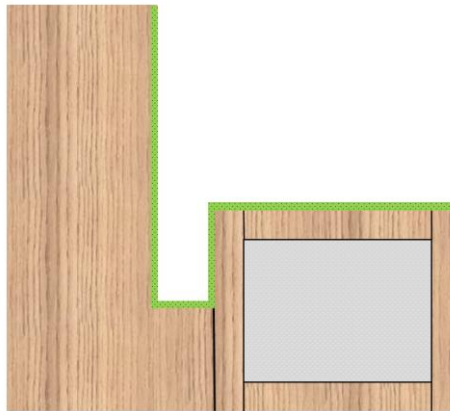


Walk on Rooflight Installation Guide

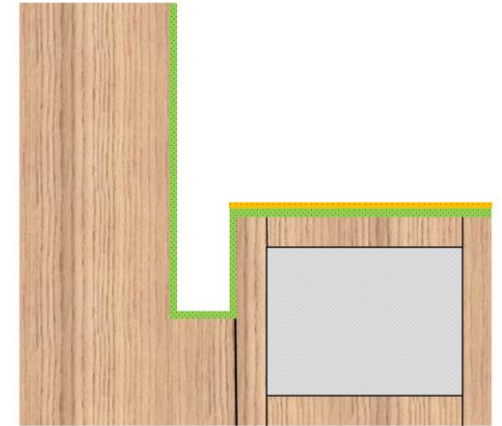
1. Fix builders fixing straps underneath the rooflight



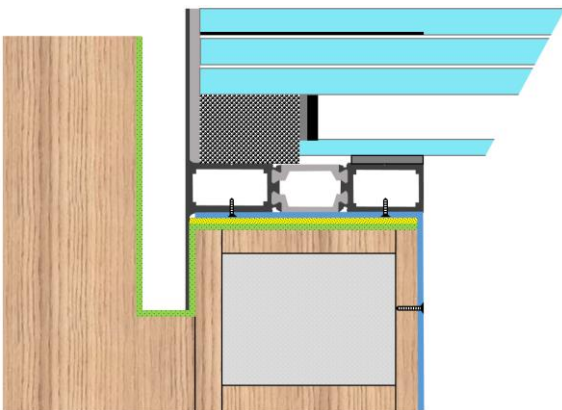
2. Apply EPDM to upstand as shown below



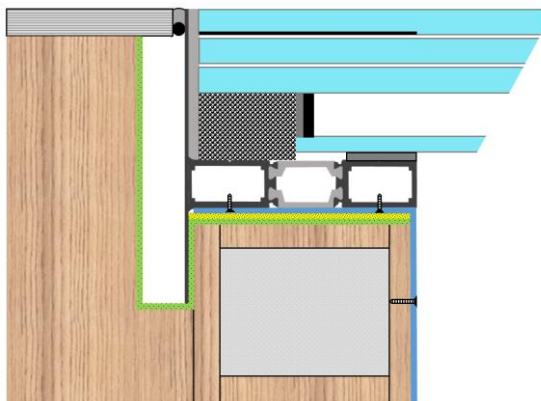
3. Apply bead of sealant as shown below



4. Lower rooflight into place and fix builders strap to upstand/kerb



5. Apply UV/ Weatherproof Sealant and finished floor covering.



6. Apply plasterboard and stop bead ensuring it is 10mm from glass

